



FUTURE REDEVELOPMENT OPPORTUNITY

1208/1210/1214 MILWAUKEE AVE

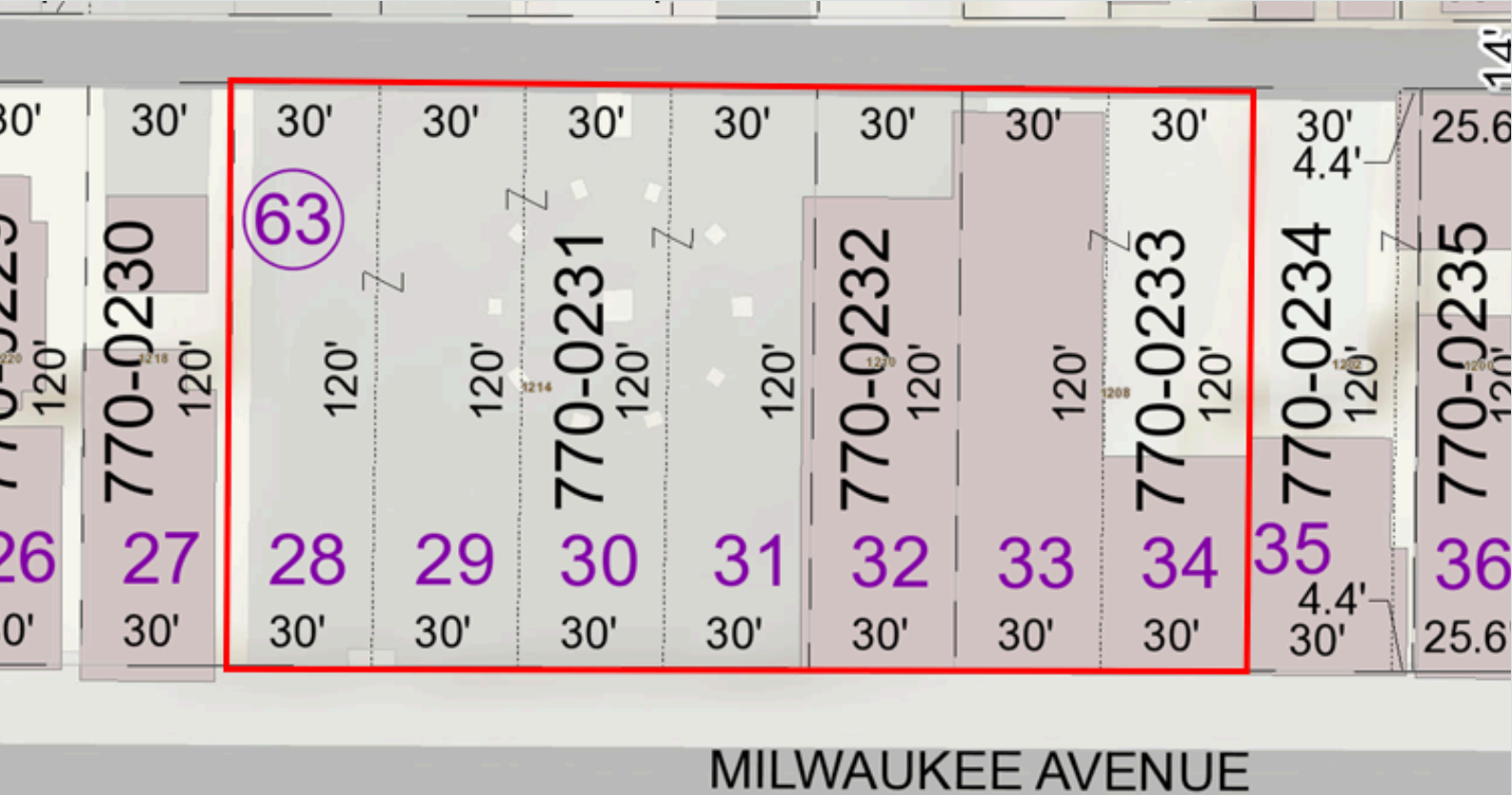


Price	Upon Request
Total Area:	25,200 SaFt (0.57 acres)
Zoning	Z-4
Permitted Uses	Commercial, Mixed-use, Multi-family
Parcel ID 1214 Milwaukee	770-0231-000

1214 Milwaukee Ave

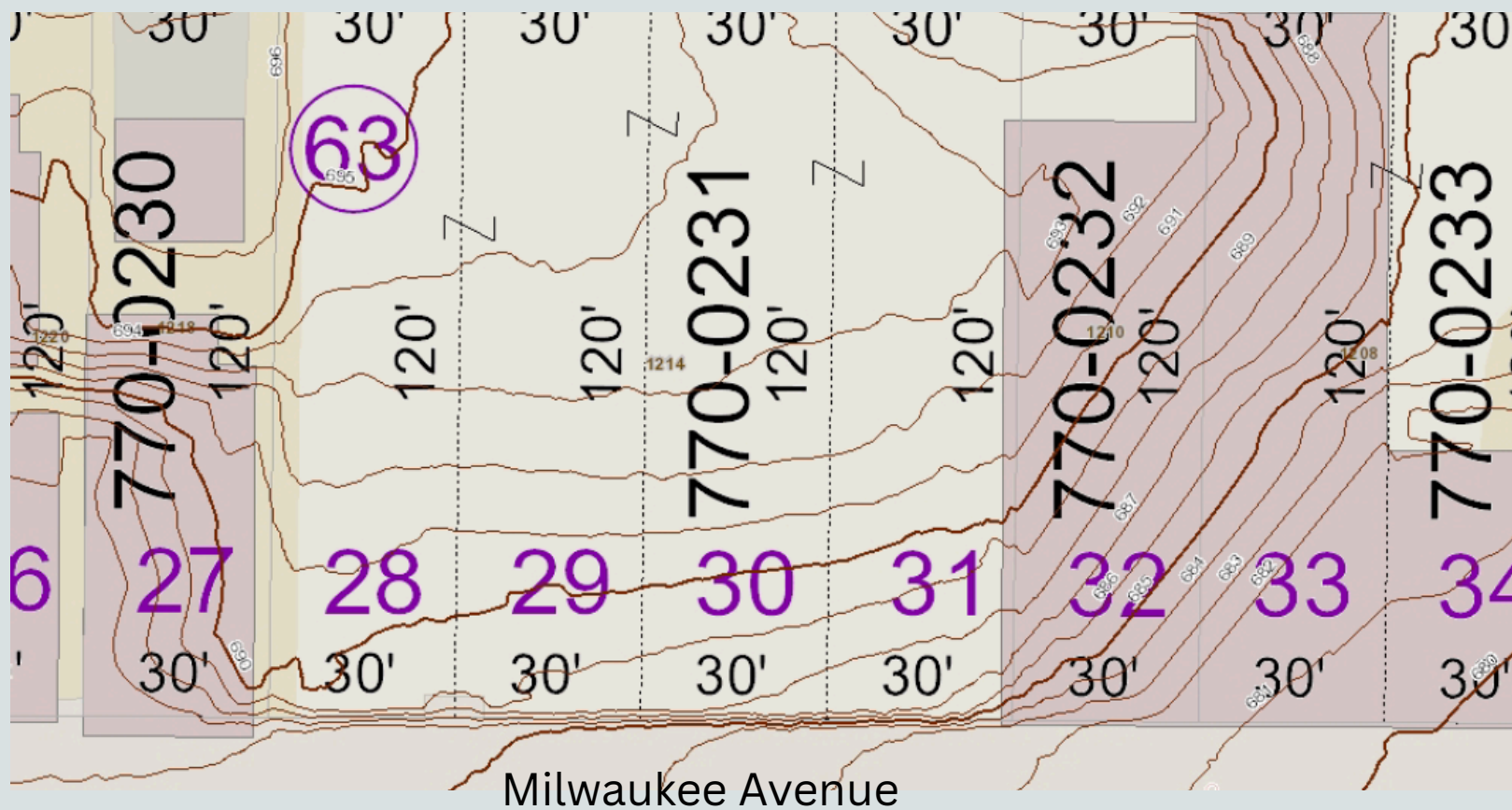
This site has been owned by the City since the municipality’s inception in the late 1800s. Known as “The Water Tower site”, 1214 Milwaukee Avenue is in the heart of all South Milwaukee has to offer.

The site is in TID #5. The two buildings east - 1208-1210 Milwaukee - are scheduled for demolition.



Patrick Brever
City of South Milwaukee
2424 15th Ave
South Milwaukee, WI 53172
Brever@smwi.org
414-765-8051

Contours 680' - 695' east to west



14-foot elevation
difference, NW to SE

10-foot elevation change
alley to Milwaukee Ave



2025 Demolish 1210 Milwaukee

